



# GlobalHealth

Generations State of Oklahoma  
Retiree Medicare Advantage Plan

## GlobalHealth Offers the *Lowest Premium* of All Plans For State of Oklahoma Retirees!

Our premium is **not increasing for 2019**, saving you up to  
**50%** compared to the other plans offered by the State!

*\$192 a month per covered person!*

Plus, our members enjoy many money-saving benefits, such as:



**\$0 UNLIMITED PRIMARY  
CARE PHYSICIAN VISITS**



**\$0 MEDICAL OR  
DRUG DEDUCTIBLES**



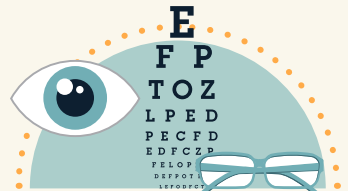
**\$0 COPAY ON MANY  
GENERIC DRUGS<sup>1</sup>**



**\$20 URGENT  
CARE VISITS**



**LOW MAXIMUM OUT OF  
POCKET OF ONLY \$3,400**



**SUPPLEMENTAL  
EYEWEAR BENEFIT**

Learn more about how you can save!

**855-620-5388 (TTY: 711)**

[www.GlobalHealth.com/osr](http://www.GlobalHealth.com/osr)

<sup>1</sup>Cost-share/copay dependent on Tier status of drug and type of pharmacy being utilized. Not applicable to all Tiers.

GlobalHealth is an HMO plan with a Medicare contract. Enrollment in GlobalHealth depends on contract renewal. By calling the listed number you may be speaking with a licensed sales representative. This information is not a complete description of benefits. Call 855-620-5388 (TTY: 711) for more information.

GlobalHealth complies with applicable Federal civil rights laws and does not discriminate on the basis of race, color, national origin, age, disability, or sex. ATENCIÓN: si habla español, tiene a su disposición servicios gratuitos de asistencia lingüística. Llame al 1-844-280-5555 (TTY: 711). CHÚ Ý: Nếu bạn nói Tiếng Việt, có các dịch vụ hỗ trợ ngôn ngữ miễn phí dành cho bạn. Gọi số 1-844-280-5555 (TTY: 711).



GlobalHealth

Generations State of Oklahoma  
Retiree Medicare Advantage Plan

You may be able to  
*save even more!*



Our Generations Retiree plan is only  
**\$192 per covered person.**

However, if you are receiving a contribution amount from  
your retirement system, you may save approximately \$105\*.

***This means your GlobalHealth Retiree Plan's  
monthly premium could be only \$87\*!***

Medicare's Annual Enrollment Period ***ends December 7th.***

Don't miss out on great savings!  
**855-620-5388 (TTY: 711)**

8am - 8pm, seven days a week (Oct 1-March 31) | Monday-Friday (April 1-Sept 30)

[www.GlobalHealth.com/osr](http://www.GlobalHealth.com/osr)

\*Actual savings may vary based on your contribution amount from your retirement system.